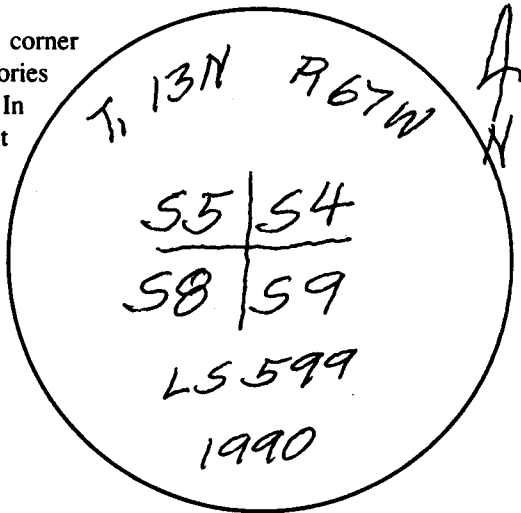


# Wyoming Certified Land Corner Recordation Certificate

This form is to be completed in accordance with W.S. 36-11-101, printed in black ink or typed, and shall be for one individual corner.

Describe below, or show in sketch attached to this form, the corner evidence found. Include condition and type of monument, accessories and ties. Describe any maintenance or rehabilitation performed. In the circle to the right, show monument inscription. If monument is determined lost or obliterated, restate the GLO or BLM original field note record; describe or show the procedure used to reestablish the corner and all data as above for a found monument.



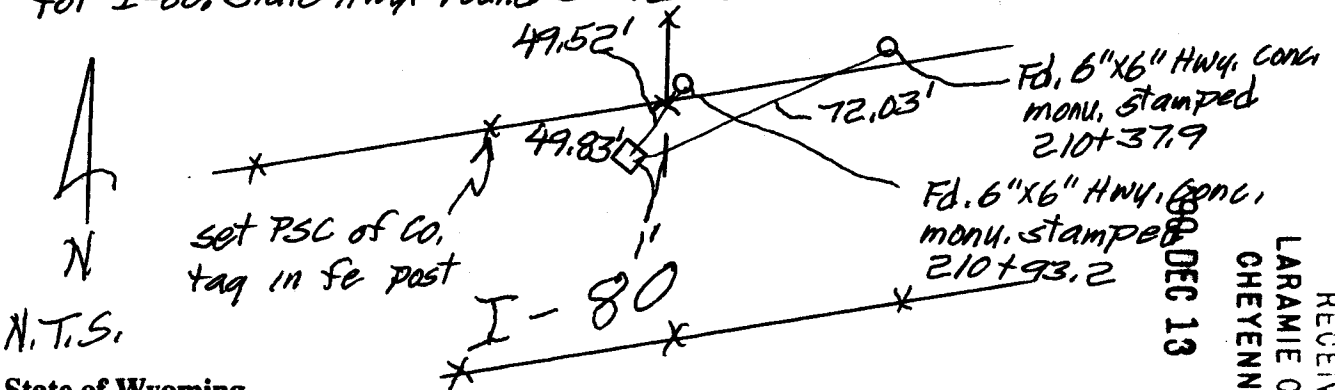
Field Date 8/16/90 Office Reference 8/17/90

GLO DESCRIPTION - SET granite boulder 20x9x9

SET #6 rebar w/3/4" alum. cap set flush stamped as shown above.

### Monument Inscription

Corner was established using state Hwy. Dept. plat + monuments, for I-80, state Hwy. found stone before I-80 was constructed.



State of Wyoming  
Office of County Clerk  
County of \_\_\_\_\_

This Certified Land Corner Recordation Certificate was filed for record on the \_\_\_\_\_ day of \_\_\_\_\_, 19 \_\_\_\_, in Book No. T 13N, R 67W, on Alpha-Numeric coordinates E-9 and was noted on the Cross Index Plat.

*Janet C. Whitehead*  
County Clerk

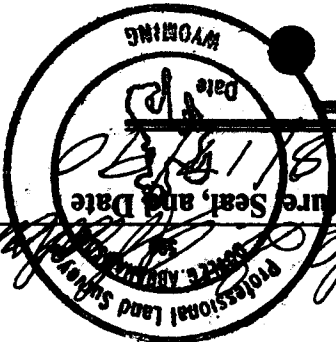
Corner Type:  
 Aliquot Corner  Other

Section(s) 54 / 819 Meridian 6th

Corner Name \_\_\_\_\_ Township 13N Range 67W Page \_\_\_\_\_

Sheet 1 of 2

078892  
RECEIVED  
LARAMIE COUNTY  
CHEYENNE, WY.  
DEC 13 PM 3 1990



Sheet 2 of 2

Company or Agency  
 Mailing Address  
 Street Address  
 City, State, ZIP  
 Telephone, FAX

10855 E. Bethany Dr.  
 BURRATA, CO. 80014  
 303-751-0741 Fax 751-2581

I, Doyle G. Thorburn, Wyoming PLS/PE PLS certify that I, or others under my supervision, have performed the work as described above and completed this form.

### Certification

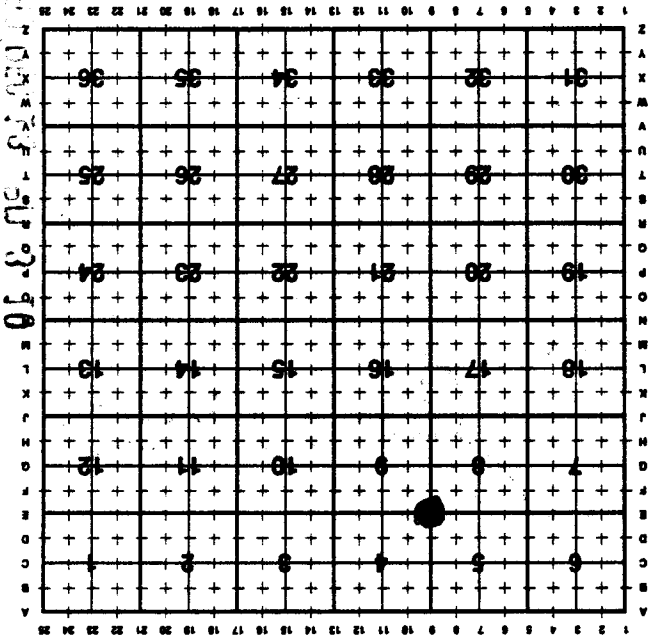
North (Y) = \_\_\_\_\_ East (X) = \_\_\_\_\_  
 Zone  NAD 1927  NGVD 1929  NAD 1983  NAVD 1988  
 W WC EC E feet/meters  
 Latitude \_\_\_\_\_ Longitude \_\_\_\_\_  
 Scale Factor \_\_\_\_\_ Geoid Height \_\_\_\_\_

### State Plane Coordinates (optional)

Section, quarter and sixteenth corners will be marked with a dot at the corner location. The alpha-numeric coordinate number is then determined for the intersection of the two lines. A corner that applies to two or more townships shall be filed under all that apply by the use of photo copies.

Closing corners will be indexed under the township in which they control ownership. For 1/4, 1/256, 1/1024 and non-alliquot corners lying between grid designations, mark the appropriate grid area with a dot and use the index code to the north and west (local systems may be used if the method is approved by the County Surveyor or Clerk and a written description of its use is filed in the front of each book of certificates).

### Directions for using the Cross Index Plat



### Cross Index Plat

3472

15 21